

**ROLLGLISS™ R550
RESCUE AND DESCENT**

WHEN EVERY SECOND COUNTS, COUNT ON US!



Secure, automatic rescue and descent for cell phone towers, aerial lifts, cranes, wind towers, buildings and more. . .

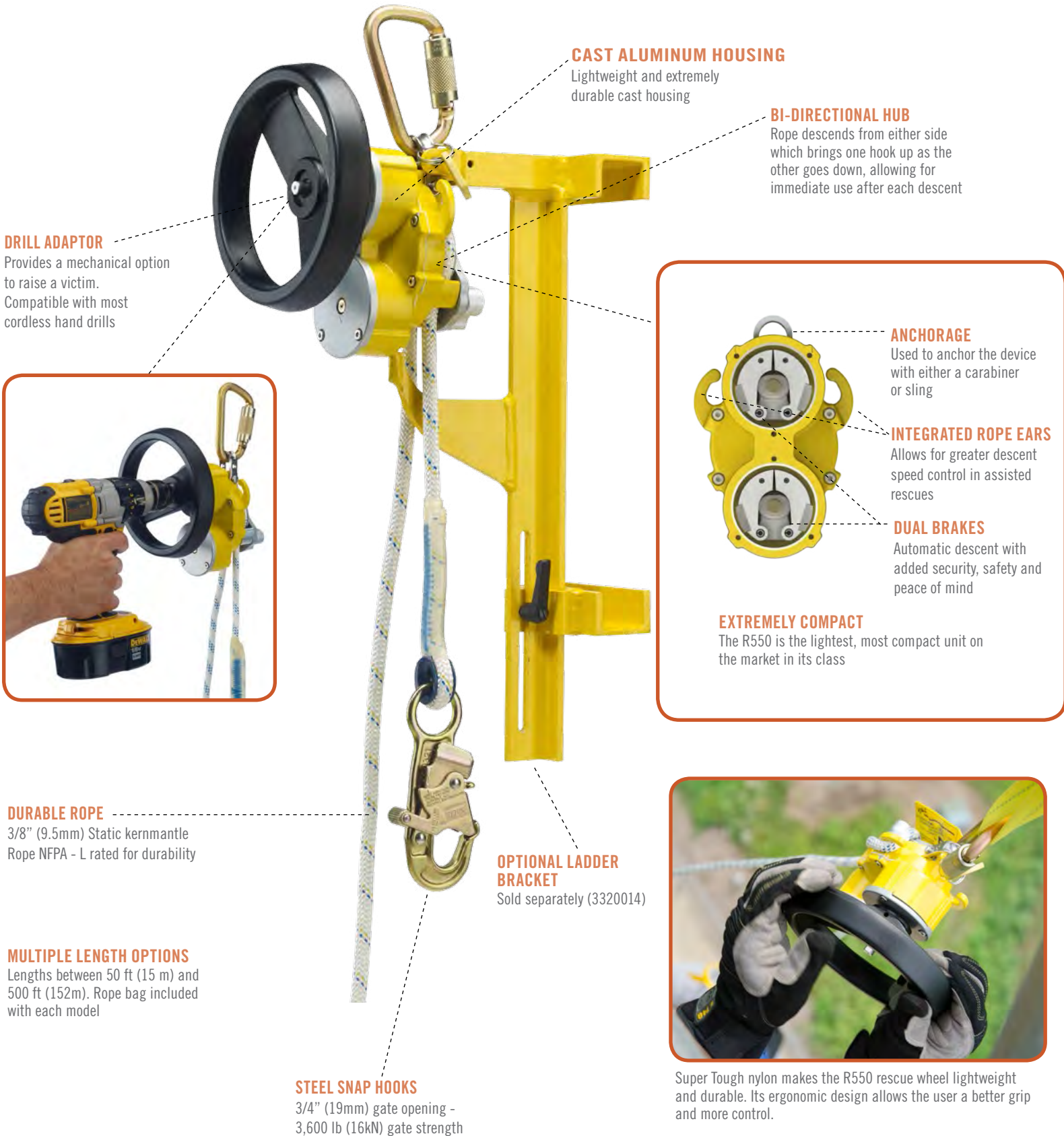


THE ULTIMATE IN FALL PROTECTION

PRODUCT
BROCHURE

SMALLER. LIGHTER. EASIER. SAFER.

Don't complicate a rescue - the Rollgliss™ R550 keeps things simple. It's the lightest, most compact, easy to use design on the market. It offers the choice of rescue, evacuation, or the versatility of assisted rescue with lifting capabilities. When every second counts, count on the R550.



DRILL ADAPTOR
Provides a mechanical option to raise a victim. Compatible with most cordless hand drills

CAST ALUMINUM HOUSING
Lightweight and extremely durable cast housing

BI-DIRECTIONAL HUB
Rope descends from either side which brings one hook up as the other goes down, allowing for immediate use after each descent

ANCHORAGE
Used to anchor the device with either a carabiner or sling

INTEGRATED ROPE EARS
Allows for greater descent speed control in assisted rescues

DUAL BRAKES
Automatic descent with added security, safety and peace of mind

EXTREMELY COMPACT
The R550 is the lightest, most compact unit on the market in its class

DURABLE ROPE
3/8" (9.5mm) Static kernmantle Rope NFPA - L rated for durability

MULTIPLE LENGTH OPTIONS
Lengths between 50 ft (15 m) and 500 ft (152m). Rope bag included with each model

STEEL SNAP HOOKS
3/4" (19mm) gate opening - 3,600 lb (16kN) gate strength

OPTIONAL LADDER BRACKET
Sold separately (3320014)

Super Tough nylon makes the R550 rescue wheel lightweight and durable. Its ergonomic design allows the user a better grip and more control.

ONE UNIT...MANY POSSIBILITIES

EMERGENCY ESCAPE*

- Secure R550 to anchor point
- Connect the snap hook to dorsal or front d-ring of harness
- Descend safely to the ground



ASSISTED RESCUE*

- Secure R550 to anchor point
- Get into position above the victim
- Attach snap hook to victim
- Raise victim to unhook their fall arrest gear
- Descend victim safely to the ground



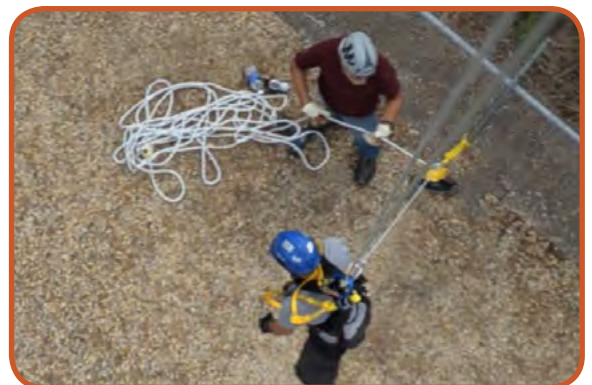
PICK-OFF RESCUE*

- Use when a victim is out of reach
- Secure R550 to anchor point and lower a second rescuer to victim
- Attach victim to rescuer
- Raise victim to unhook their fall arrest gear
- Descend both rescuer and victim to safety



CUSTOM RESCUE*

- The R550 can be used for custom rescues, like an angled descent
- Secure R550 to anchor point on or near the ground
- Run the rope up through a pulley above the victim
- Raise victim to unhook their fall arrest gear
- Lower the victim to the ground, away from structure



*Always refer to user manual and seek proper training before attempting.

ROLLGLISS™ R550 RESCUE AND DESCENT

ESCAPE UNITS

Includes carabiner (2), 4 ft (1.22 m) anchor sling and rope bag



PART#	LENGTH	WEIGHT
3325100	100 ft (31 m)	12.75 lbs (5.78 kg)
3325200	200 ft (61 m)	16.55 lbs (7.51 kg)
3325275	275 ft (84 m)	19.40 lbs (8.80 kg)
3325300	300 ft (92 m)	20.35 lbs (9.23 kg)



RESCUE UNITS

Includes carabiner (2), 4 ft (1.22 m) anchor sling and rope bag



PART#	LENGTH	WEIGHT
3327050	50 ft (16 m)	11.95 lbs (5.42 kg)
3327100	100 ft (31 m)	13.85 lbs (6.28 kg)
3327150	150 ft (46 m)	15.75 lbs (7.14 kg)
3327200	200 ft (61 m)	17.65 lbs (8.01 kg)
3327275	275 ft (84 m)	20.50 lbs (9.30 kg)
3327300	300 ft (92 m)	21.45 lbs (9.73 kg)
3327325	325 ft (100 m)	22.40 lbs (10.16 kg)
3327350	350 ft (107 m)	23.85 lbs (10.82 kg)
3327400	400 ft (122 m)	25.75 lbs (11.68 kg)
3327450	450 ft (137 m)	27.65 lbs (12.54 kg)
3327500	500 ft (153 m)	29.55 lbs (13.40 kg)

RESCUE UNITS W/CASE

Includes edge protector, 4 ft (1.22 m) anchor sling (2), 2.5 ft (.76 m) anchor sling, pulley, rope grab, carabiner (3), rope bag, and humidity case



9508289
Fully sealed case provides 10 year minimum storage life. External humidity indicator allows user to inspect the seal without opening case.

PART#	LENGTH	WEIGHT
3326100	100 ft (31 m)	35.3 lbs (16.01 kg)
3326300	300 ft (92 m)	42.9 lbs (19.46 kg)
3326350	350 ft (107 m)	44.8 lbs (20.32 kg)

ACCESSORIES



PART#	DESCRIPTION
9506162	Rope Bag
3620005	4 ft (1.22 m) Anchoring Sling
3620004	2.5 ft (.76 m) Anchoring Sling
3320003	Edge Protector w/Carabiner
9504733	Pulley
AC202D	Rope Grab
2104523	Rescue Pole
2104529	Rescue Pole Snap Hook Adaptor
3320014	Ladder Bracket
9508289	Humidity Case
2000112	Carabiner 11/16" (1.75 cm) Gate
2000114	Carabiner 2 3/16" (5.56 cm) Gate

Rescue Pole, adjustable 6 - 12ft (1.8 - 3.6 m). Use with snap hook adaptor to attach R550 to a victim out of reach.



SPECIFICATIONS

PART#	DESCRIPTION
Max. Descent Height (1 person)	1640 ft (500 m)
Max. Descent Height (2 person)	575 ft (175 m) at 620 lb (282 kg)
Max. Person	2
Max. Weight	620 lb (282 kg)
Max. Descent Distance	17,814 ft (5430 m) at 310 lb (141 kg)
Hoisting Capacity (1 person)	310 lb (141 kg)
Max. Hoist Height (1 person)	33 ft (10 m)
Descent Speed	2-3ft (0.6 - 0.9m) per second
Factory Inspection Frequency (Unsealed)	At least every 5 years
Factory Inspection Frequency (Sealed)	At least every 10 years
Standards	OSHA, ANSI Z359.4-2013, CSA Z259.2.3-12
Rope	3/8 in (9.5mm) Kernmantle
Snap Hooks	Plated Steel
Housing Material	Aluminum Alloy
Mechanical Advantage	40:1

Custom rope lengths available



Capital Safety - USA: 800 328 6146
Canada: 800 387 7484
www.capitalsafety.com